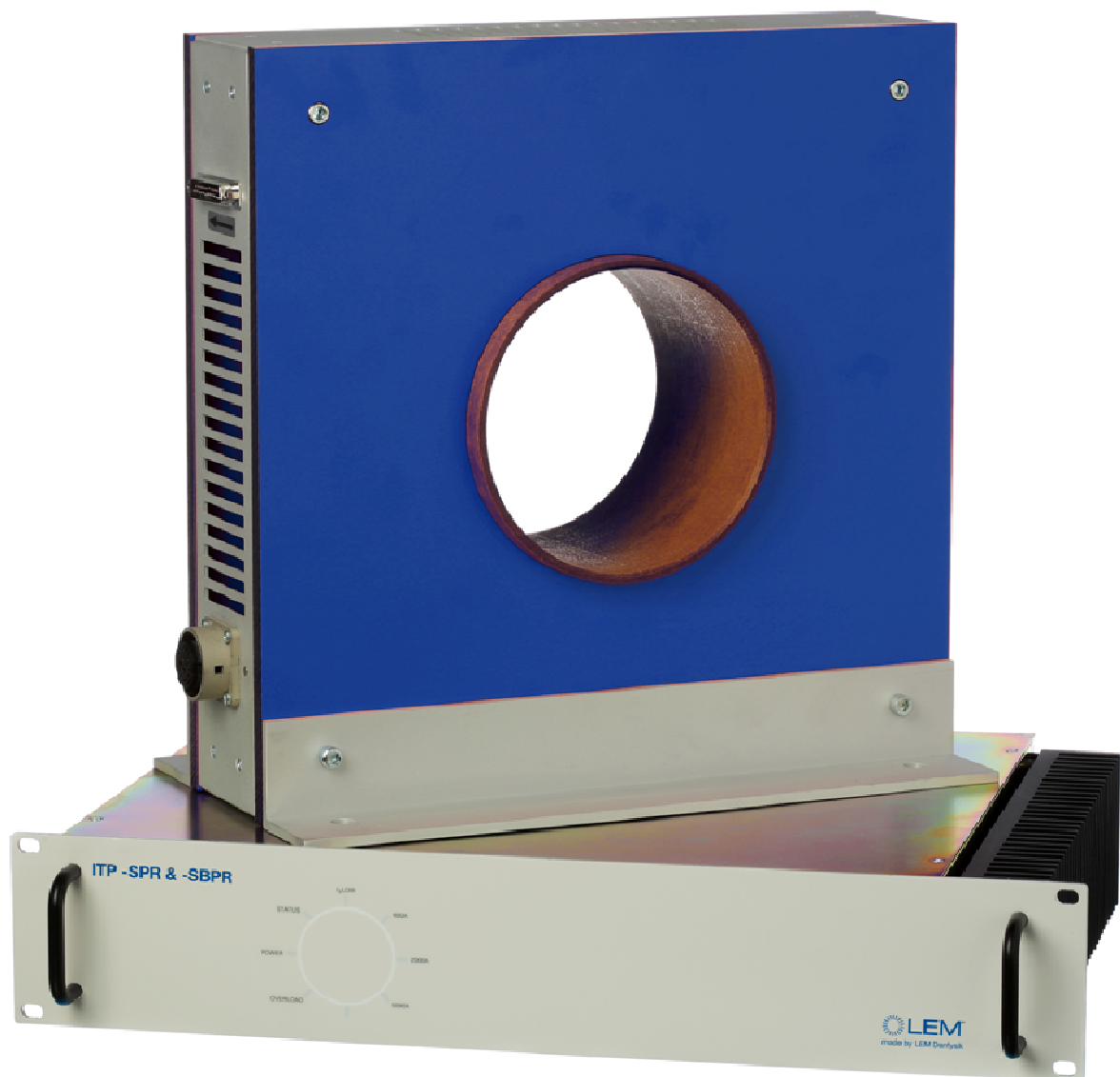


ITP 5000-SPR

High Precision Current Transducer System

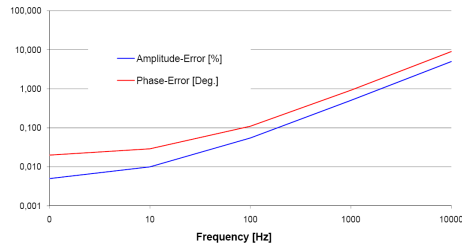
- High Linearity < 0.001 %
- Low Offset < 0.004 %
- High Bandwidth > 50 kHz
- Low Phase Error < 0.07° @ 50 Hz



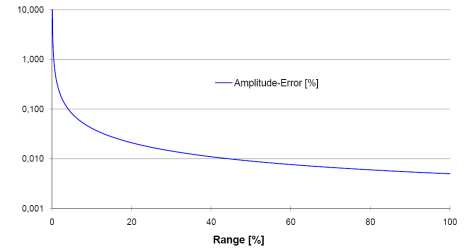
Specifications

Primary Current Range	
DC, Peak	7000 A
RMS Sinus	5000 A
Overload Ability	
Short Time (100 mS)	300% (21000 A _{pk})
Bandwidth	DC ... 50 kHz
Temperature Influence	1 ppm/K
Output Ratio	2 A _{rms} at 5000 A _{rms}
Linearity	0.001 %
Offset	0.004 %
Frequency Influence	0.5 %/kHz
Angular Influence	0.02° + 0.9°/kHz

Amplitude- / Phase-Error vs. Frequency

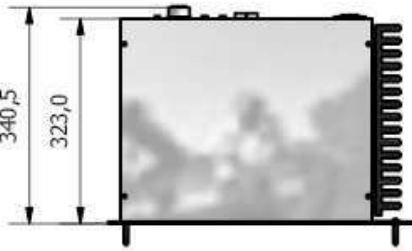
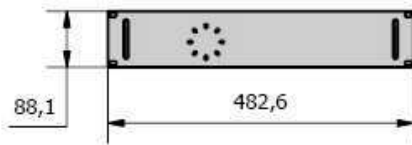


Amplitude-Error vs. Range (DC)



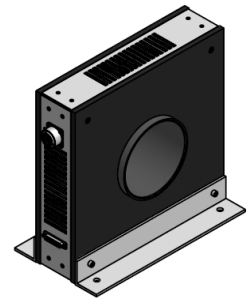
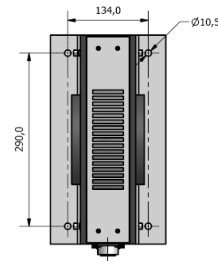
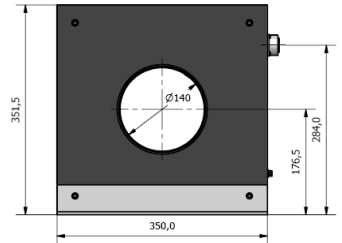
Dimensions (in mm)

Rack



Weight: ~ 5 kg

Transducer Head



Weight: ~ 17 kg

General Data

Test voltage transducer head:	5kVrms AC
Operation temperature (Rack):	10 ... 40°C
Operation temperature (Head):	0 ... 55°C
Operation humidity:	20 ... 80%
Warranty period:	24 months
Supply voltage:	100 / 110 / 230 V _{AC} selectable, 50 / 60 Hz
Power consumption:	100 VA max.

Order Number ITP 5000-SPR

consisting of:

- 5000 Amp programmable transducer head, type STH 5000
- Electronics unit (19" rack mount), wired for 230/115 or 100V AC, 50 or 60Hz
- Transducer head connecting cable (10 m), 20 and 30 m optional available
- Analogue output cable (1.5 m)
- Current output adapter
- Power cord for Europe
- Manual
- Compliance certificate